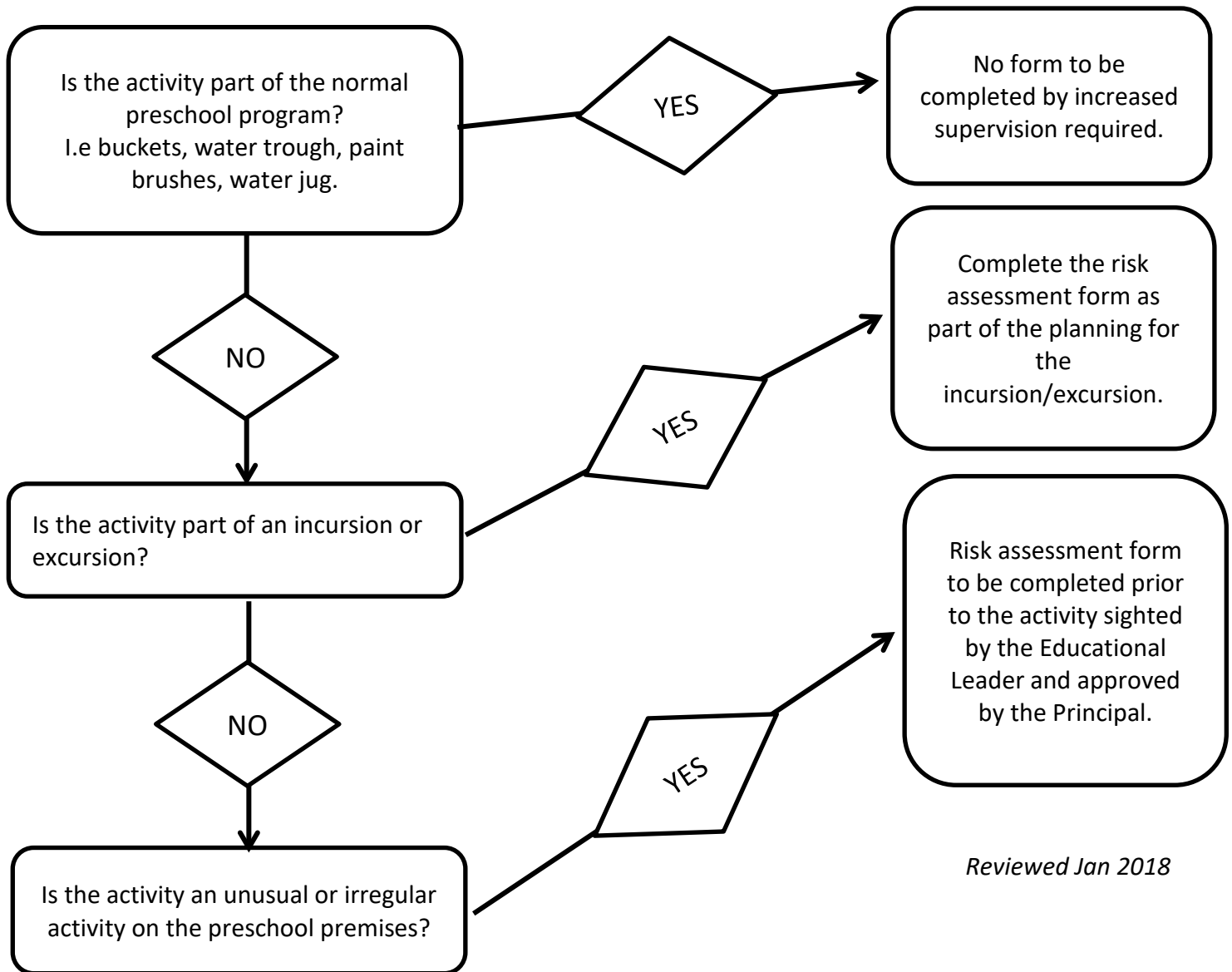




Water Safety Procedure

Experiences involving water carry an increased risk which needs to be considered beforehand. All water activities will incorporate the following supervision and safety guidelines.

Flowchart for determining whether a risk assessment is required to be carried out:



Reviewed Jan 2018

General guidelines for supervision and safety

- Ensure the water container is not filled to a dangerous depth. Remember that children can drown in very shallow amounts of water.
- Ensure there is no equipment surrounding the water trough or other receptacle that a child could use to climb into the water trough.
- Ensure the water activity is within direct eyesight of a staff member at all times.